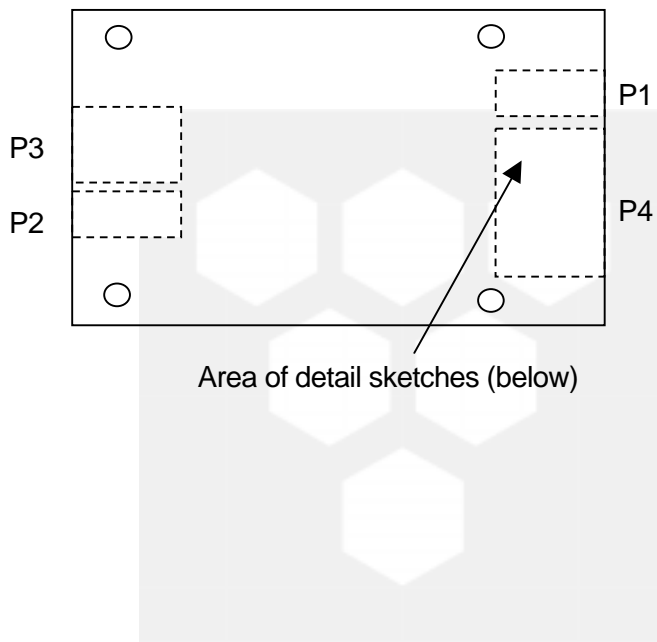


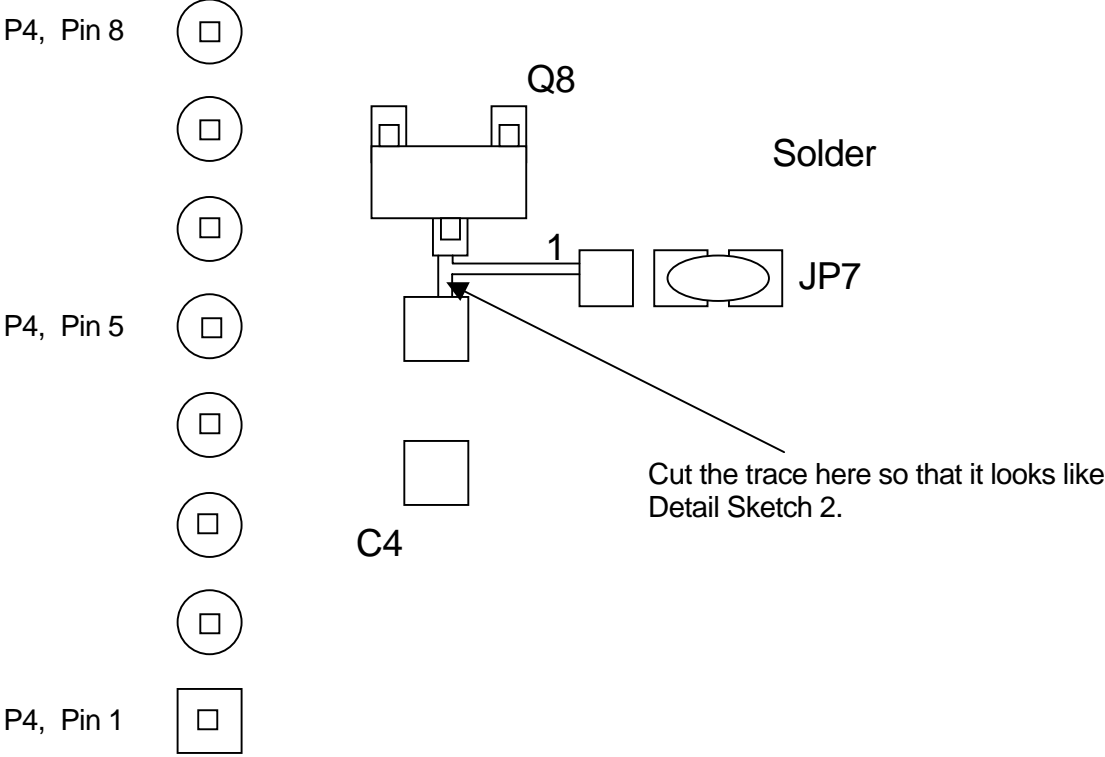
Installation instructions for 10K and 0 Ohm resistors – the resistors fix problems with valve alignment using V1 versions of the board stack and valves with proximity switches.

**Underside of the McLane AUX/STEP board**

The connectors shown by the dashed lines (P1 to P4) are mounted on the topside of the board. All work will be performed on the underside of the board. All views are of the underside of the board.

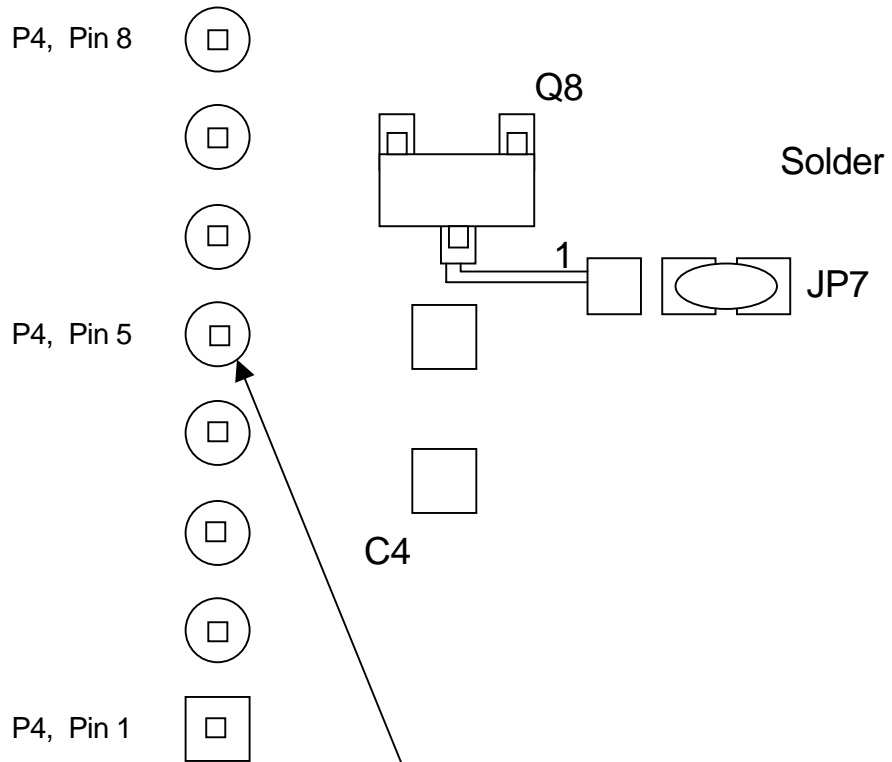


**Detail Sketch 1** – Locate the area shown below on the underside of the AUX/Stepper board.



**Note 1:** Only some of the pads and traces present in this area of the board are shown.

**Detail Sketch 2** – The board should look like this once the trace has been cut.



Remove the solder from Pin 5 of P4. One end of a 0 Ohm resistor will rest there.

**Detail Sketch 3** – Place the 10K and 0 Ohm resistors as shown and solder them into place. The resistors should be surface mount devices in a 1206 package. McLane can provide such resistors at no cost on request.

